

Let

Phoenix Street, Millbay, Plymouth PL1 3DN



£795 per month

2 bedroom Apartment

- ✓ AVAILABLE FROM 1st April 2015
- ✓ 2 Double Bedrooms
- ✓ 2 Bathrooms
- ✓ Engineered Oak Flooring
- ✓ High Gloss Kitchen
- ✓ Door Entry System
- ✓ Under Ground Parking
- ✓ Views over Plymouth Sound





50 Victoria Road
St Budeaux
Plymouth, PL5 1RG

01752 54 77 89
www.viewme.co.uk

Description

Viewme are delighted to offer this excellently presented apartment for Let.

The accommodation briefly comprises:

Lounge/Kitchen/Dining Room, Family Bathroom, Master Bedroom, En-suite Shower Room, 2nd Bedroom, Balcony with City and Sea views.

Location

Cargo 1 is located off Millbay Road (opposite Brittany Ferries entrance), a prime location within walking distance of the City Centre and Hoe seafront.

There are major supermarkets and amenities within a short distance.

The Royal William Yard is within walking distance giving access to trendy bars, restaurants and night life.

Major bus links from the City Centre can take you to anywhere in the city.

Millbay is currently undergoing major regeneration and facilities available to residents include, Royal William Yard, Plymouth Pavilions, King Point Marina and the Dock Restaurant.

Fourth Floor

Kitchen/Lounge/Dining Room - High gloss kitchen with white base and eye level units, dark roll top work surface with spot lighting.

Integrated appliances include: Dishwasher, Hob, Oven, Extractor, Fridge and Freezer.

Stainless steel sink and drainer with mixer tap.

Floor to ceiling sliding doors leading out onto the balcony with views of the Sea, towards the City Centre, Wyndham Square, Central Park, Manadon and beyond.

Engineered oak flooring, Radiators, television and telephone points

Master Bedroom - Neutrally decorated double bedroom with fitted wardrobe.

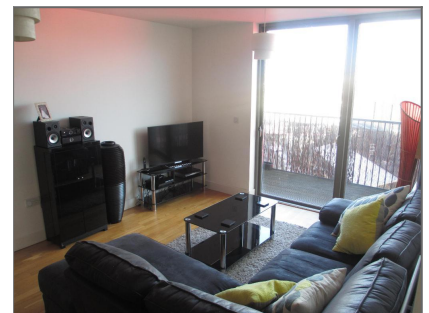
Full length window with views towards the City Centre and beyond.

Carpet flooring, radiator, television and telephone points.

En-Suite Shower Room - Partially tiled bathroom with white suite comprising:



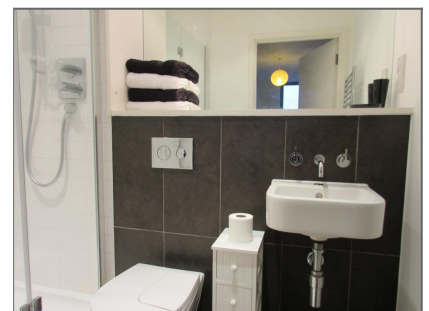
View of the Sea from the Balcony



Reception Area



Master Bedroom



En-Suite Shower Room



50 Victoria Road
St Budeaux
Plymouth, PL5 1RG

01752 54 77 89
www.viewme.co.uk

Shower cubicle, low level WC, wash hand basin.

Large wall mounted mirror, heated towel rail and shaver point.

Tiled flooring.

Bedroom 2 - Good size Double bedroom with a full length window with views towards the City Centre and beyond.

Neutrally decorated with carpet flooring.

Television point, radiator, electrical sockets.

Family Bathroom - Partially tiled family bathroom with white fitted suite comprising:

Bath with shower over, low level WC, wash hand basin, wall mounted mirror, wall mounted heated towel rail, ceiling spotlights and tiled flooring.

Balcony - From the lounge area open the floor to ceiling sliding doors leading out onto the balcony with views towards the Sea, City Centre, Wyndham Square, Central Park, Manadon and beyond.



Bedroom 2



Family Bathroom

Administration Fees

Deposit and fees apply, ask a member of staff for details.



View from Balcony

Additional Information

Sea and City Views. Allocated underground parking for one vehicle.

Council Tax Band: C £1,366.98 per annum 2014/15 (data captured via the Plymouth City Council Web Site)

Sorry no DSS, HB, LHA or Pets

Non Smokers preferred