

Let

St Michaels Close, Mutton Cove, Plymouth PL1 4RX



£625 per month

1 bedroom Flat

- ✓ AVAILABLE 22nd September 2023
- ✓ Recently Refurbished
- ✓ Allocated Off Road Parking Space
- ✓ Double Bedroom
- ✓ DG & GCH
- ✓ Bath with Shower Over
- ✓ White Goods Included
- ✓ Part Furnished



Energy Efficiency Rating			
Score	Energy rating	Current	Potential
92+	A		
81-91	B		
69-80	C		76 C
55-68	D	66 D	
39-54	E		
21-38	F		
1-20	G		

Description

Property has been re-introduced to the rental market. IF YOU HAVE ALREADY APPLIED FOR THIS PROPERTY, THERE IS NO NEED TO RE-APPLY.

Viewme are delighted to bring back to the rental market this one bedroom ground floor flat located in Mutton Cove.

Early viewing is highly recommended to avoid disappointment.

Accommodation briefly comprises:

Entrance Hallway, Bathroom, Double Bedroom, Living Area and Kitchen.

Location

The property is located 2 minutes walk from the sea front with views across to Mount Edgcombe, Royal William Yard and Plymouth Coastline.

Within a few minutes walk you will find yourself on the promenade where fishermen & women try their luck along the coastline. Mount Wise Lido adult and children's pools are open to the public during the summer.

Plymouth Albion stadium is a short distance away where you will find the local team playing championship matches. Around the Plymouth Albion site there are sports facilities such as a gym, running track football pitches and astro pitches as well as plymouth cricket club.

Major bus route nearby with buses going into the city centre and sounding areas of Plymouth.

Ground Floor

Entrance Hallway - uPVC/Double Glazed front door leading into the hallway which leads to all areas of accommodation.

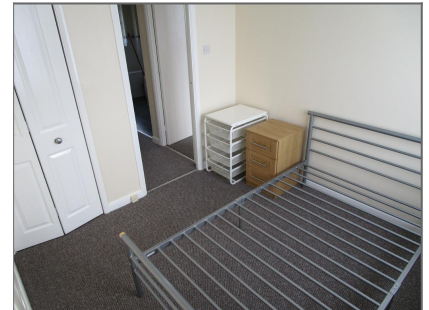
Neutrally decorated with carpet flooring.

Bathroom - Good sized bathroom with white suite comprising:

Low level W.C, wash hand basin with wall mounted mirror, and 'P' shaped bath with shower over.

White tiled walls with tiled affect vinyl flooring.

Single modesty double glazed window with roller blind.



Double Bedroom



Bathroom



Kitchen



View across to Royal William Yard



Double Bedroom - Neutrally decorated double bedroom with double glazed window overlooking the rear aspect of the property with net curtains.

Built in wardrobe, carpet flooring, radiator and electrical sockets.

Furniture included: Double metal bed frame, bedside cabinet and metal drawer unit.

Lounge/Dining Room - Good sized Neutrally decorated lounge with carpet flooring.

Dual double glazed windows over looking the rear and side aspect of the property.

Radiator, electrical sockets and T.V point.

Furniture included: set of three occasional tables, tv table with drawer, fold up dining table & 2 chairs.

Kitchen - Off-white kitchen with base and eye level units with black roll top work surface and white tiled splash backs.

Integral electric oven and gas hob. Washing machine and fridge freezer.

Double glazed window overlooking the front of property.

Grey vinyl flooring.

Administration Fees

Holding Fee - £140.00 (deductable from rent in advance - T&C's apply)

Month Rent in Advance £625.00 (less holding fee T&C's apply)

Deposit £700.00



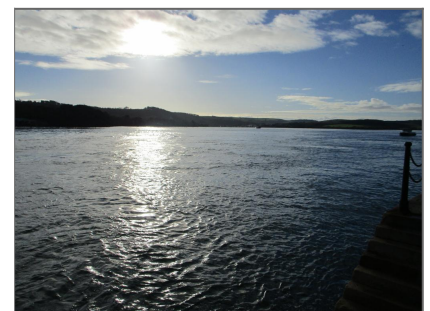
Coast Path Walk - nearby



View across Tamar Estuary Nearby



View across to Plymouth Sound - Nearby



Looking towards Cornwall - 2 minute walk



Energy Efficiency and Environmental Impact

Score	Energy rating	Current	Potential
92+	A		
81-91	B		
69-80	C		76 C
55-68	D	66 D	
39-54	E		
21-38	F		
1-20	G		

Additional Information

Council Tax band:A £1,407.71 2023/2024 (date sourced from Plymouth City Council, Council Tax Band web site).

Off Road Allocated Parking Space for Vehicle

Sorry No Pets (lease)

Non Smoker Preferred